



VOLIUM

User Manual

This is not a medical device

# VOLIUM

CLASSYS Customer Service Center

---

Distributed by CLASSYS Inc.

CLASSYS, 208, Teheran-ro, Gangnam-gu, Seoul, R.O.K

**+82-1600-8731**



# VOLIUM | Table of Contents

<b>Precautions for Use</b> -----	p.3
<b>Names and Functions of Components</b> ---	p.4
<b>Check before Use</b> -----	p.5
<b>Product Features</b> -----	p.6
<b>Features and Functions of Each Mode</b> ---	p.7
<b>How to Control</b> -----	p.8
- Power ON/OFF -----	p.8
- Changing Mode, Changing Intensity -----	p.8
- Changing Guide Voice Language -----	p.8
<b>How to Use</b> -----	p.9
- Lifting Care Mode -----	p.10

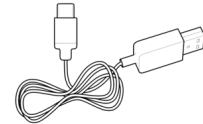
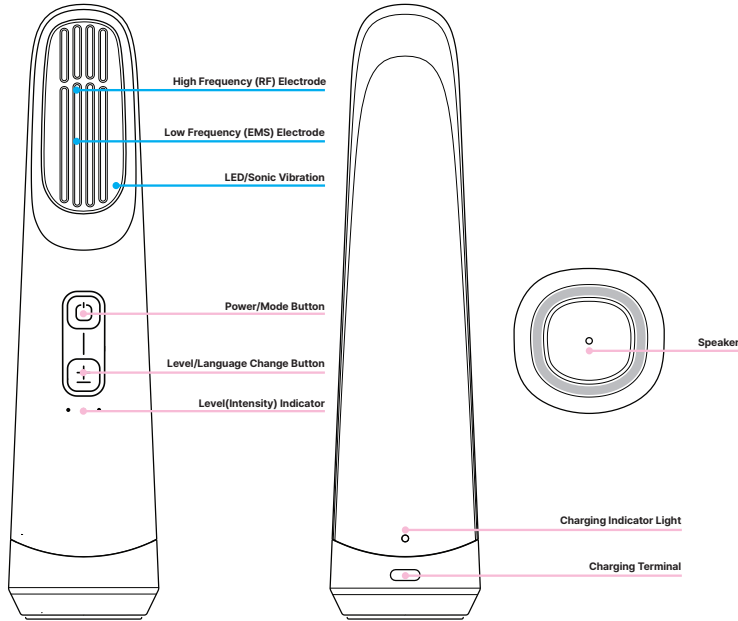
- Wrinkle Care Mode -----	p.11
- Slim Care Mode -----	p.12
<b>Charging</b> -----	p.13
<b>After Use Care</b> -----	p.14
- How to Clean -----	p.14
- How to Store -----	p.14
- Maintenance and Inspection -----	p.14
<b>FAQ</b> -----	p.15
<b>Troubleshooting before Reporting a Problem</b> --	p.16
<b>Specifications</b> -----	p.17
<b>Caution</b> -----	p.18

# VOLIUM | Precautions for use

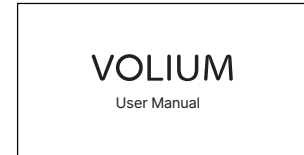
- ⊙ It is not recommended to use this product for body care as it is a facial care product.
- ⊙ Do not use in the mouth, eyelids, or mucous membranes.
- ⊙ Do not place this device directly on your ear.
- ⊙ When using this device on the neck, avoid using it on the Adam's apple, where the thyroid gland is located.
- ⊙ For your safety, do not use it while charging.
- ⊙ Pregnant or breast-feeding are not recommended to use this device.
- ⊙ It is not recommended for use by people, including infants and young children, who cannot express their opinions clearly.
- ⊙ Do not use if you have a light sensitivity condition such as sun allergy.
- ⊙ Do not use this device immediately after shaving.
- ⊙ Do not use this device while driving, walking, etc.
- ⊙ Do not use the device head while it is still in one place. Use it by moving it according to the guide in this user manual.
- ⊙ There is a risk of low-temperature burns when used for a long time, so please follow the recommended usage time.
- ⊙ Do not stare directly at the LED light during operation. Excessive exposure may cause eye damage.

- ⊙ Before use, remove any precious metal from areas that come into contact with this device.
- ⊙ In the following cases, be sure to consult with a specialist before use.
  - ◆ Cardiovascular disease, endocrine abnormalities, sensory nervous system abnormalities.
  - ◆ If you have symptoms of eye disease, surgery, infectious disease, or epilepsy.
  - ◆ People taking hormone imbalance medication.
  - ◆ If you have other diseases or symptoms or have a physical abnormality.
  - ◆ If you are receiving dermatological treatment or have a skin condition.
  - ◆ Allergic skin, severe cystic acne, dermatitis, immediately after plastic surgery.
  - ◆ Open wounds, hypertrophic scars, keloid skin, hypersensitive skin.
  - ◆ In case of wearing a pacemaker, device implantation, or metal prosthetic device.
- ⊙ When using this device, various types of skin irritation may occur depending on the individual's skin condition. If this type of irritation occurs, reduce the frequency of use.
- ⊙ Do not use the device for purposes other than those described in our user manual.

# VOLIUM | Names and Functions of Components



2 USB Charging Cable (C-type)



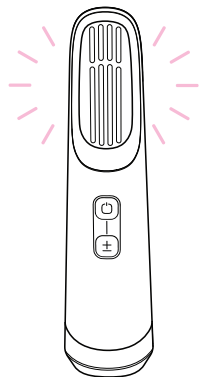
3 User Manual



4 Product Warranty

1 Main Body

# VOLIUM | Check before Use



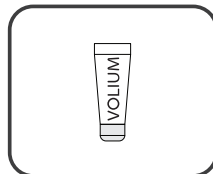
## Recommended Product Usage Cycle

We recommend using this product at least twice a week. A heating sensation may occur on the skin if you use it more than twice in succession on each area.

### Check before Use



- ⦿ Before care, cleanse makeup and impurities.
- ⦿ If you use the product without removing makeup, the chemical components of the cosmetics may cause problems with the device.



- ⦿ To use the device effectively, we recommend using facial skin care products for high-frequency.

### Check after Use



- ⦿ After care, depending on the skin condition, gently roll dedicated product onto the skin for absorption.



- ⦿ After care, be sure to wipe off any residue remaining on the electrode.

### Cautionary Ingredients



Denatured Alcohol



UV Protection Ingredients



Retinol



Oil Ingredients

- ⦿ Please be careful when using cosmetics containing the following ingredients as they may reduce their effectiveness.

\* Ingredients to watch out for: denatured alcohol, sunscreen ingredients, retinol, oil ingredients, etc.

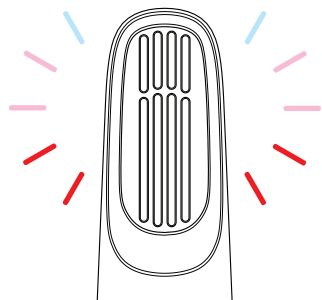


- ⦿ After care, avoid exposing the skin to direct sunlight.



- ⦿ After care, it is recommended to avoid physical stimulation such as scrubbing or exfoliation as much as possible.

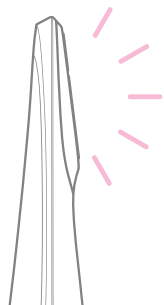
# VOLIUM | Product Features



## 3 Mode In 1

### Feature 1

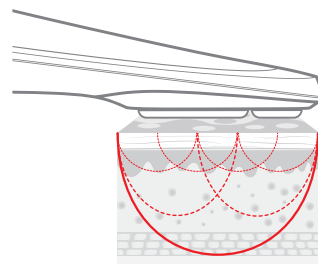
VOLIUM is a home beauty device that uses high-frequency thermal energy (deep heat effect), LED light energy, and EMS (Electronic Muscle Stimulation) to help improve skin elasticity, and provides a facial lifting effect by stimulating skin tissue and muscles with microcurrent. The head electrode is made of a material (SUS316L) proven for medical use, so it can be used confidently.



## Ergonomic Design

### Feature 2

VOLIUM was designed to provide a natural grip and delicate care for the user's convenience, even for curved skin. For the product to achieve maximum performance, it was designed through research into ergonomics to assist the pressing force of the fingers holding the product. In addition, we have considered the user so that the ultra-lightweight allows the user to keep and use it for a long time without feeling fatigued.



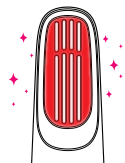
## Multi-Electrode

### Feature 3

VOLIUM is designed using Multi-Electrode technology to deliver energy to various skin layers. It increases the management effect by dynamically varying the appropriate wavelength depending on the lifting care and wrinkle care mode. By changing the shape of the electrode and the output frequency, high-frequency energy is delivered evenly deep into the skin from the epidermis to the dermis and subcutaneous fat layer, promoting collagen production and helping skin elasticity.

# VOLIUM | Features and Functions of Each Mode

## MODE 1 Lifting Care Mode



RF + LED(Red+IR)  
+ Sonic Vibration



### Lifting up a Wide Area

Wholly and quickly lifts a large area of the face. When caring for cheeks, forehead, jawline, etc., high-frequency deep heat generation helps produce collagen in the skin. Red and near-infrared wavelengths help with lifting and anti-aging.

## MODE 2 Wrinkle Care Mode



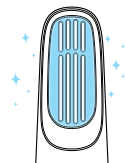
RF + LED(Pink)  
+ Sonic Vibration



### Wrinkle Care with Delicate Irradiation

The wrinkle care mode, which is applied to areas that require delicate and detailed irradiation, irradiates high frequency energy perfectly and closely to various local areas such as the philtrum, around the eyes, between the eyebrows, saggy mouth, and nasolabial folds, helping to improve immediate and long-term anti-aging.

## MODE 3 Slim Care Mode



EMS + LED(Blue+IR)  
+ Sonic Vibration



### Aging and Fat Accumulation Control

Slim care mode that manages muscle aging and fat accumulation, such as buccal fat pad and double chin. EMS provides a skin-muscle meridian massage effect with low-frequency wavelengths, stimulating stiff and enlarged muscles and helping to create a slim face line.

# VOLIUM | How to Control



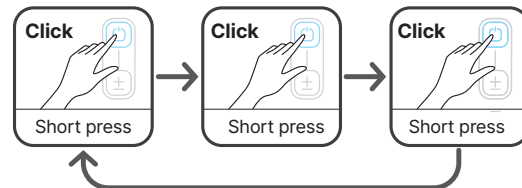
Power/Mode Button

## Power ON/OFF

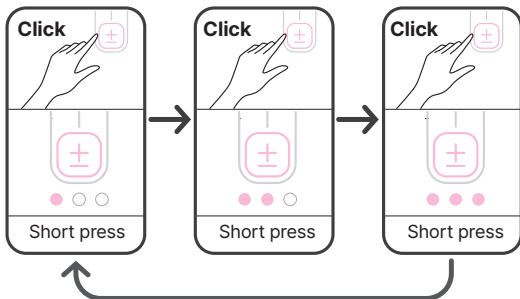


© Press and hold the power/mode button for 3 seconds to turn the power on or off.

## Changing Mode

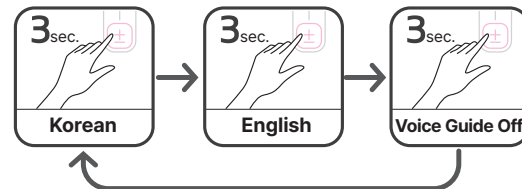


## Changing Intensity



Intensity/  
Language Button

## Changing Guide Voice Language: Press and Hold for 3 seconds



# VOLIUM | How to Use

## STEP 1



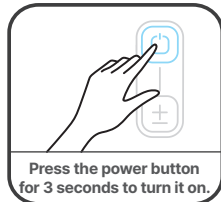
- ① Cleanse thoroughly of makeup and skin impurities.

## STEP 2



- ① Apply the device-specific product appropriately to the area where it will be used.

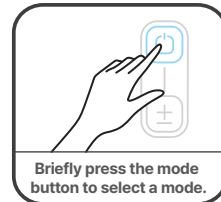
## STEP 3



Press the power button for 3 seconds to turn it on.

- ① Press and hold the power/mode button for 3 seconds to turn it on.

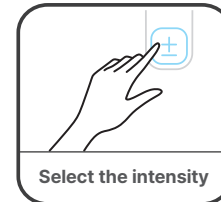
## STEP 4



Briefly press the mode button to select a mode.

- ① Use the power/mode button to select a mode.
- ① Refer to mode selection (p.8).

## STEP 5



Select the intensity

- ① Use the level button to adjust the intensity.
- ① Always select intensity 1 at first until you get used to using it.

## STEP 6



- ① When the operation starts after selecting the mode, place the device head on the skin for a moment on the area you want to care for and press and wait until it starts.

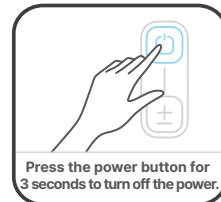
## STEP 7



**5 Min.**  
for each mode

- ① Each mode lasts 5 minutes, and output stops when time elapses.
- ① When using, make sure the electrode head is in close contact with the skin. If it is not in contact, there is no output.
- ① For information on how to use each mode, refer to '8p'.
- ① **Please be aware that if moisture-based liquid comes on the metal-electrode, it will interpret it as skin contact and automatically use power.**

## STEP 8



Press the power button for 3 seconds to turn off the power.

- ① Press and hold the power/mode button for 3 seconds to turn off the power. Additionally, the power is automatically turned off if there is no operation for 30 seconds after ending care mode.

## STEP 9



- ① After treatment, adjust skin condition as needed.

# VOLIUM | Lifting Care Mode

## Lifting Care Mode

MODE  
**1**  
RED LED

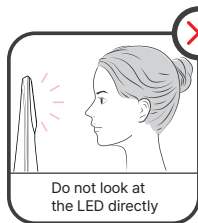
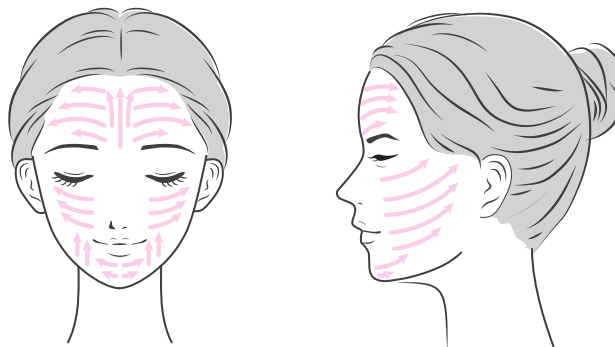


RF + LED(Red+IR)  
+ Sonic Vibration



Lift up of a Wide Area

How to use lifting care mode: Use the device by attaching it to the skin and moving it in the direction shown in the picture.



# VOLIUM | Wrinkle Care Mode

## Wrinkle Care Mode

MODE  
**2**  
PINK LED

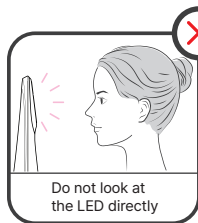
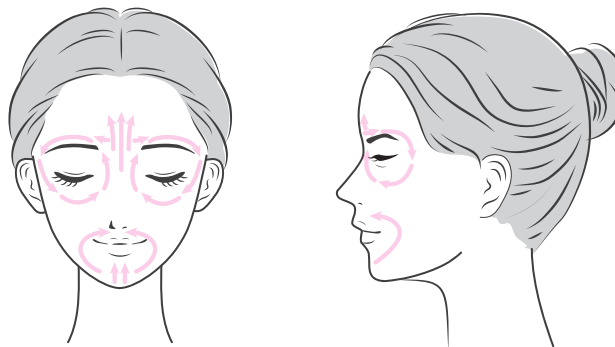


RF + LED(Pink)  
+ Sonic Vibration



Wrinkle Care with Delicate Irradiation

How to use wrinkle care mode: Place the device close to the skin and move it as shown in the picture.



# VOLIUM | Slim Care Mode

## Slim Care Mode

MODE  
3  
BLUE LED

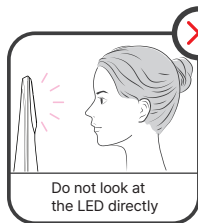
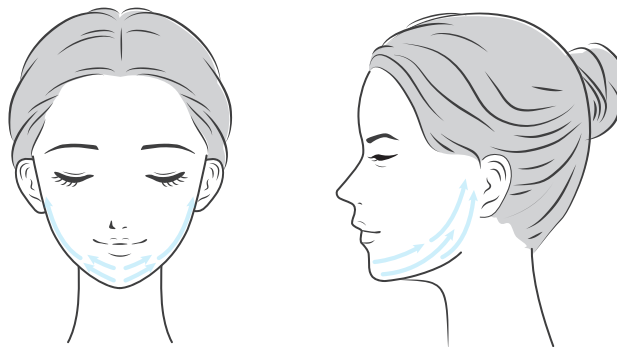


EMS + LED(Blue+IR)  
+ Sonic Vibration



**Aging and Fat Accumulation Control**

How to use slim care mode: Place the device close to the skin and move it as shown in the picture.



Do not look at  
the LED directly



Do not stay in one place



Please use it closely



Use with dedicated products

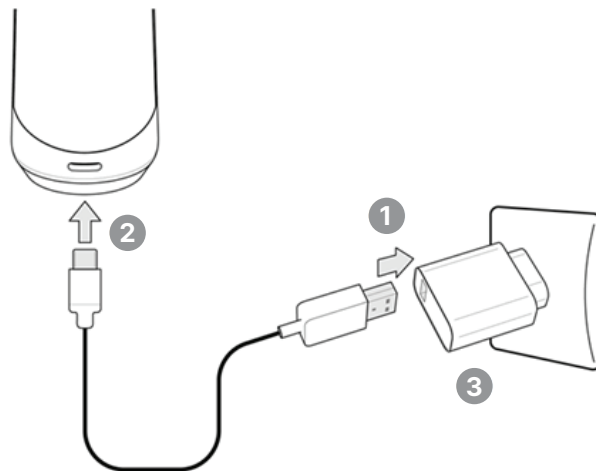
# VOLIUM | Charging

## How to Charge

- Ⓞ This rechargeable product can be used without connecting to a charging adapter.
- Ⓞ Before using it for the first time, or if the device is not been used for a long time, fully charge the battery and check that the charging indicator changes from white to LED OFF to indicate full charge.
- Ⓞ When the battery is low, the power indicator light and voice guidance signal blinks.

## Charging Order

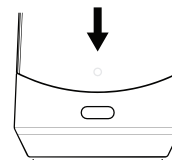
1. Connect to the charging adapter using a USB cable.
2. Connect the USB cable to the Charging terminal of this device.
3. Charging begins when the charging adapter is connected to a power outlet.



## Check Charging Status

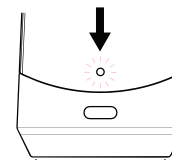
- Ⓞ When charging this device, you can check the battery charging status through the battery status indicator.

### White: Off



Fully Charged

### White On or Flashing



Charging

# VOLIUM | After Use Care

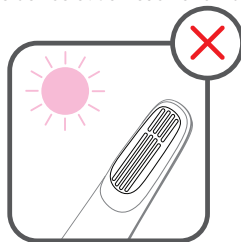
## How to Wash

1. Make sure the power is off.
2. Wipe the electrode head of the device using a soft cloth or wet tissue.
  - Do not use alkaline cleaners, alcohol, thinner, benzene, acetone, or other substances.
  - Do not leave the device with gel or residue on it.
3. Wipe the device with a dry cloth to remove any remaining moisture.



## How to Store

- If the device will not be used for a long time, clean it before storing it.
- When the device is not in use, turn off the power and disconnect the AC adapter from the wall outlet.
  - Do not store the device near a stove or heater, in a bathroom, exposed to direct sunlight, or in an unstable location.
  - Keep the device out of reach of children.



## Maintenance and Inspection

- If the device is not used for a long time, inspect it carefully and ensure that the device is properly checked before use. Make sure it operates properly and safely.
- If there is a problem with the device, check the troubleshooting section, identify the problem, and if the problem persists, have it repaired.
- If the device appears malfunctioning or damaged, contact the manufacturer.

## Customer Service Center Information

CLASSYS Co., Ltd.  
CLASSYS, 208, Teheran-ro, Gangnam-gu, Seoul  
Consumer Counseling Center + 82-1600-8731

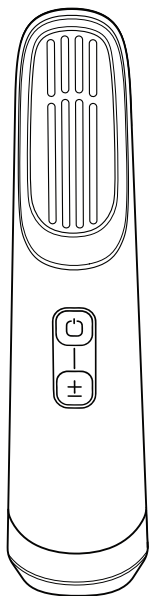
## VOLIUM | FAQ

Question	Answer
How much gel or cream should I apply?	Apply enough gel or cream to allow the device to roll smoothly.
Can I use this product in the bathroom?	This device is not waterproof. Store it in a cool place away from moisture.
The skin becomes red after using the product.	The skin may temporarily turn red due to the heat caused by high-frequency waves.
I feel a stinging sensation when using the product.	In the slim care mode using the EMS function, there is stimulation due to the nature of the microcurrent. Use it by adjusting the intensity, and be sure to use a device-specific product to avoid direct friction on the skin.
Can I use it multiple times on one area?	Since repeated high-frequency irradiation can cause harm to the skin, it is important to care for it by gently rolling it to avoid excessive heat overlap.
Should I only use VOLIUM exclusive products?	We recommend using the products specifically designed for the best effect of VOLIUM.
Do I need to wipe off device-specific products after care?	Products designed exclusively for the device are cosmetics that help improve skin. After use, gently roll them to be absorbed. However, gently wipe and adjust the amount if it feels sticky depending on individual skin type or seasonal changes.
Can I use it after dermatological procedures?	It can be used after most procedures. However, when using it immediately after the procedure, please consult a specialist before using it.
After the treatment, my skin feels warm.	It is natural to feel the heat in the skin after high-frequency treatment. If you are worried about your skin condition the next day, using a cold mask pack can help soothe it.
Can I use it after indoor or outdoor exercise?	After excessive exercise, blood vessels dilate, and blood circulation speeds up, which can make your skin more sensitive. Also, when your skin temperature rises due to ultraviolet rays after outdoor activities, you may feel a different intensity of stimulation than usual, so it is best to take care after your skin condition has stabilized.

## VOLIUM | Troubleshooting before Reporting a Problem

Symptom	Troubleshooting
The product does not work properly.	<ul style="list-style-type: none"><li>• Make sure you press the power button properly.</li><li>• Charge this device according to the instructions in the user manual.</li><li>• When charging this device, check that the device's battery status indicator lights up.</li></ul>
The power does not turn on.	<ul style="list-style-type: none"><li>• While charging, the power does not turn on even if you press the power button.</li><li>• Connect the charging adapter to the power supply.</li><li>• Check whether the charging indicator light is turned on while charging.</li><li>• Check if the charger is working.</li><li>• Check whether the voltage indicated on this device matches the local mains voltage.</li></ul>
The temperature of the product rises during use.	If the temperature of this device feels much higher than the temperature of the body, stop using care and contact the manufacturer.
A voice says "Please use later," and the power turns off.	If the head temperature rises due to excessive use, the power will be turned off for safety. Please use it after resting for 10 minutes.
It is in close contact with the skin, but the guide voice says, "Please attach it to the skin."	Please check whether the appropriate amount of gel or cream is applied.

# VOLIUM | Specifications



## Details

<b>Power Source</b>	DC5V / 2A
<b>Power Consumption</b>	Approx. 15W
<b>Battery</b>	Li-poly Battery
<b>Operating Temperature</b>	5°C ~ 35°C
<b>Operating Humidity</b>	0% ~ 90%
<b>Recommended use cycle</b>	Use at least 2 days apart (It may vary depending on the intensity or mode of use.)
<b>Full Charge Time</b>	Approximately 2 hours (when using 5V, 2.0A charger) *Charging time may vary depending on charging adapter specifications, remaining battery capacity, ambient temperature, or charging conditions.
<b>Use Time after Full Charge</b>	Approximately 2 hours (It may vary depending on the intensity or mode of use.)

## Precautions for Use

- Ⓢ Do not disassemble, repair, or modify this product.
- Ⓢ Malfunction may result in fire, electric shock, or injury.
- Ⓢ This product contains magnetic materials that may adversely affect objects such as credit cards or pacemakers. Please use it with caution.
- Ⓢ Handle the power plug with dry hands. If not, it may cause electric shock.
- Ⓢ Do not drop an object on or apply shock to the product.
- Ⓢ Please keep away from places with strong vibrations or magnets.
- Ⓢ When removing the cable plugged into the main unit, do not pull the cable, but be sure to remove it by pulling the end of the cable to remove it.
- Ⓢ Use by children is prohibited.
- Ⓢ Be careful when moving the product as there is a risk of injury due to falling.
- Ⓢ Be careful, as static electricity may be generated when used in a dry environment.
- Ⓢ You can prevent static electricity by using the product after touching a metal object.
- Ⓢ Keep away from fire.
- Ⓢ Do not use or store flammable substances close to the product. There is a risk of explosion or fire.
- Ⓢ Do not use products that use high-voltage electricity near this product (e.g., electric mosquito nets).
- Ⓢ Electrical shock may cause damage to this product.
- Ⓢ Please be aware that if moisture-based liquid comes on the metal-electrode, it will interpret it as skin contact and automatically use power.

## Battery Precautions

- Ⓢ This product has a battery built into the system. When using it for the first time after purchase, fully charge the battery.
- Ⓢ Since the battery is a consumable product, the usable time of the battery gradually decreases when used for a long period of time.
- Ⓢ The built-in battery cannot be removed or replaced at the customer's discretion, and paid/free service is not available if the product is removed arbitrarily.
- Ⓢ If the battery needs to be removed or replaced, be sure to contact the manufacturer.
- Ⓢ Battery removal and replacement is subject to a paid service.
- Ⓢ There is a risk of explosion if the battery is damaged.
- Ⓢ Do not shock the product, place it in water, or store or leave it in a car for a long time.
- Ⓢ There is a risk of explosion if the battery is not replaced correctly.
- Ⓢ Do not dispose of batteries arbitrarily. When disposing of batteries, follow the disposal procedures of your local area.
- Ⓢ Use batteries approved and recognized by CLASSYS.  
If not, there is a risk of explosion and fire.
- Ⓢ Do not heat the battery with fire. There is a risk of explosion or fire.
- Ⓢ Do not store or use in places with high temperatures above 60°C and high humidity (inside cars, saunas, etc.).
- Ⓢ If the battery leaks fluid or emits a foul odor, contact the manufacturer.
- Ⓢ When charging, do not use other power devices or circuits to charge the battery.  
There is a risk of battery damage and fire.
- Ⓢ If the battery is fully discharged and not used for a long period of time, battery life may be reduced.

---

## Precautions for Charging

---

- Ⓢ Please firmly insert the charging adapter so it will not be shaken. Use only the indicated power and voltage. An unstable connection may lead to a fire.
- Ⓢ Stop using if smoke or strange odor occurs. In this case, turn off the power immediately, remove the charging adapter, and contact the manufacturer. It may cause fire or electric shock if you continue to use it.
- Ⓢ Do not damage, process, bend, twist, or heat the charging adapter and USB cable. It might damage the cord, causing fire or electric shock.

---

## Precautions for Product

---

- Ⓢ Do not connect the power cords of multiple products to a single outlet at the same time. This may cause overheating and eventually fire. Unplug the power cord during thunder or lightning, as it may cause fire.
- Ⓢ When moving the product, unplug the power cord and all cables connected to the product. It may cause fire or electric shock.
- Ⓢ To better use the product, install it in a place free from electromagnetic interference.
- Ⓢ Keep plastic packaging out of reach of children.

---

## Precautions for Storage

---

- Ⓢ Avoid places exposed to direct sunlight or sources of heat such as heating appliances to avoid a risk of fire.
- Ⓢ Do not store in places that generate heat, such as near an electric heater. It may cause fire or malfunction.
- Ⓢ Do not install in a place with much moisture, dust, or soot. It may cause fire or electric shock.
- Ⓢ Do not keep in places where the temperature is too high (above 35°C), too low (below 5°C), or in places with high humidity.

---

## Precautions after Use

---

- Ⓢ This product can cause skin irritation, such as redness or tingling, depending on the individual's skin condition. If this irritation persists, stop immediately and consult a dermatologist before further use.

# VOLIUM | 제품 보증서

---

제 품 명      볼리움 (VOLIUUM)

---

모 델 명      CL-ACD2

---

제품번호를 스케덤 사이트에 인증해주세요. 구입일로 부터 1년간 고객의 과실 혹은 손망실이 아닌 기기의 이상이 있을 시 무상 A/S를 받으실 수 있습니다.

공정거래위원회 고시 소비자분쟁 해결 기준에 의거 교환 또는 보상 받을 수 있습니다.

반품 및 교환장소 : 판매원 또는 구입처

Please enter up the serial number on the SKEDERM official site. The product will be received free repair warranty for 1 year from the date of purchase if there is a problem with the device, not the consumer's fault or loss.

This product can be exchanged or compensated according to the fair trade commission notification consumer dispute resolution standard.

Return or exchange place : Sales person or place of purchase



고객센터 (Service Center) +82-1600-8731

WWW.SKEDERM.CO.KR

---

SKIN  
DESIGN  
BY   
SCIENCE